

E P S I L O N
 THE STAR  RESIDENCES
 GOLD COAST

1 Bed + 1 Bath Residence

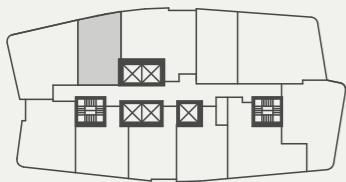
Type: A
 Levels: 22 - 42

Internal Area: 50m²
 Balcony Area: 5m²
 Total Area: 55m²

Residence Number

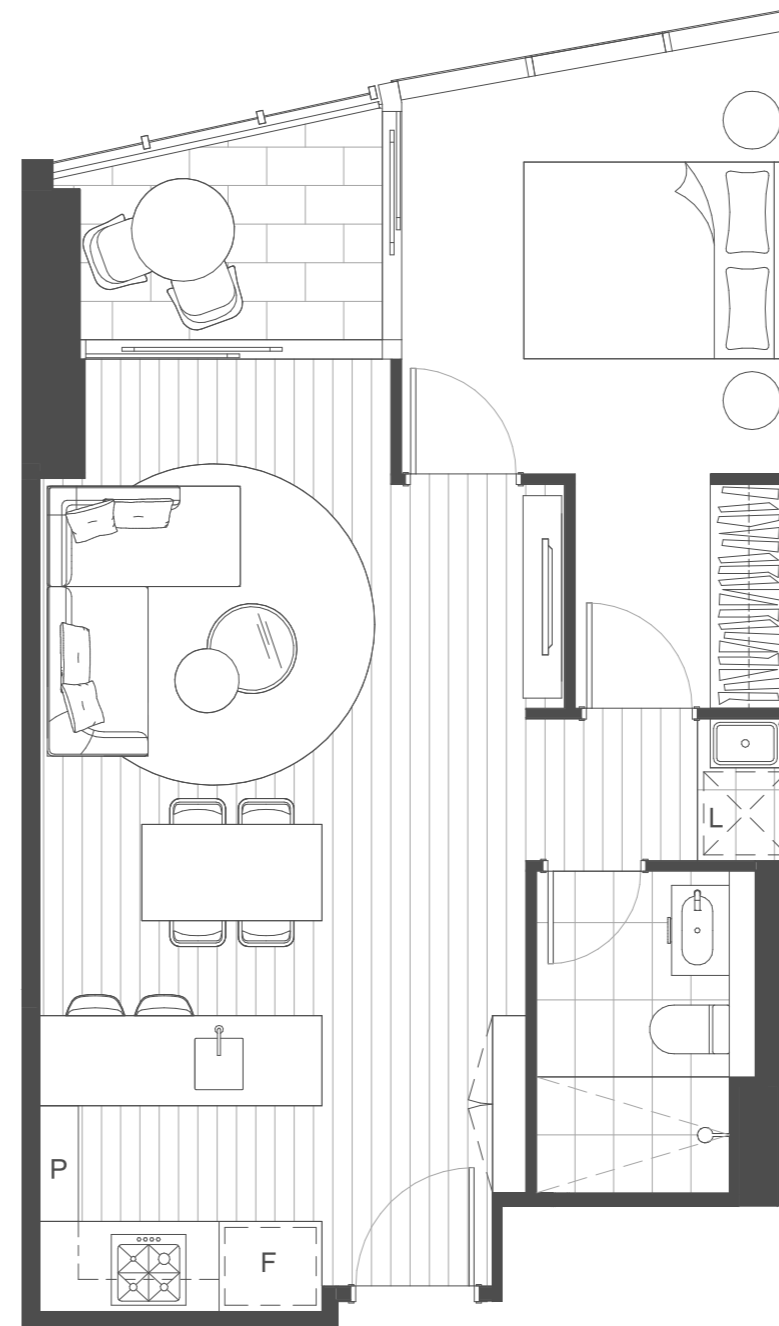
| | | |
|-------|-------|-------|
| 22204 | 22904 | 23604 |
| 22304 | 23004 | 23704 |
| 22404 | 23104 | 23804 |
| 22504 | 23204 | 23904 |
| 22604 | 23304 | 24004 |
| 22704 | 23404 | 24104 |
| 22804 | 23504 | 24204 |

Location



DISCLAIMER

The contents of this page, including all drawings and plans, have been prepared on an indicative basis for illustrative purposes only, do not necessarily reflect the final design or layout, are not necessarily to scale, and may be subject to change without notice. While the information in this page has been prepared with due care, to the maximum extent permitted by law, Destination Gold Coast Consortium (comprising Destination Gold Coast Pty Ltd, The Star Entertainment Group, Far East Consortium and Chow Tai Fook Enterprises) and their related entities, employees, officers, directors and agents do not make any representation or warranty about the accuracy or completeness of the information in this document and exclude any liability arising in connection with this document.



E P S I L O N
 THE STAR  RESIDENCES
 GOLD COAST

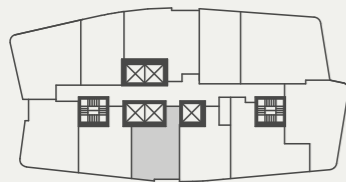
1 Bed + 1 Bath Residence

| | | |
|----------------|------------------|------------------|
| Type: B | | |
| Levels: | 22 - 42 | 43 - 63 |
| Internal Area: | 51m ² | 50m ² |
| Balcony Area: | 5m ² | 5m ² |
| Total Area: | 56m ² | 55m ² |

Residence Number

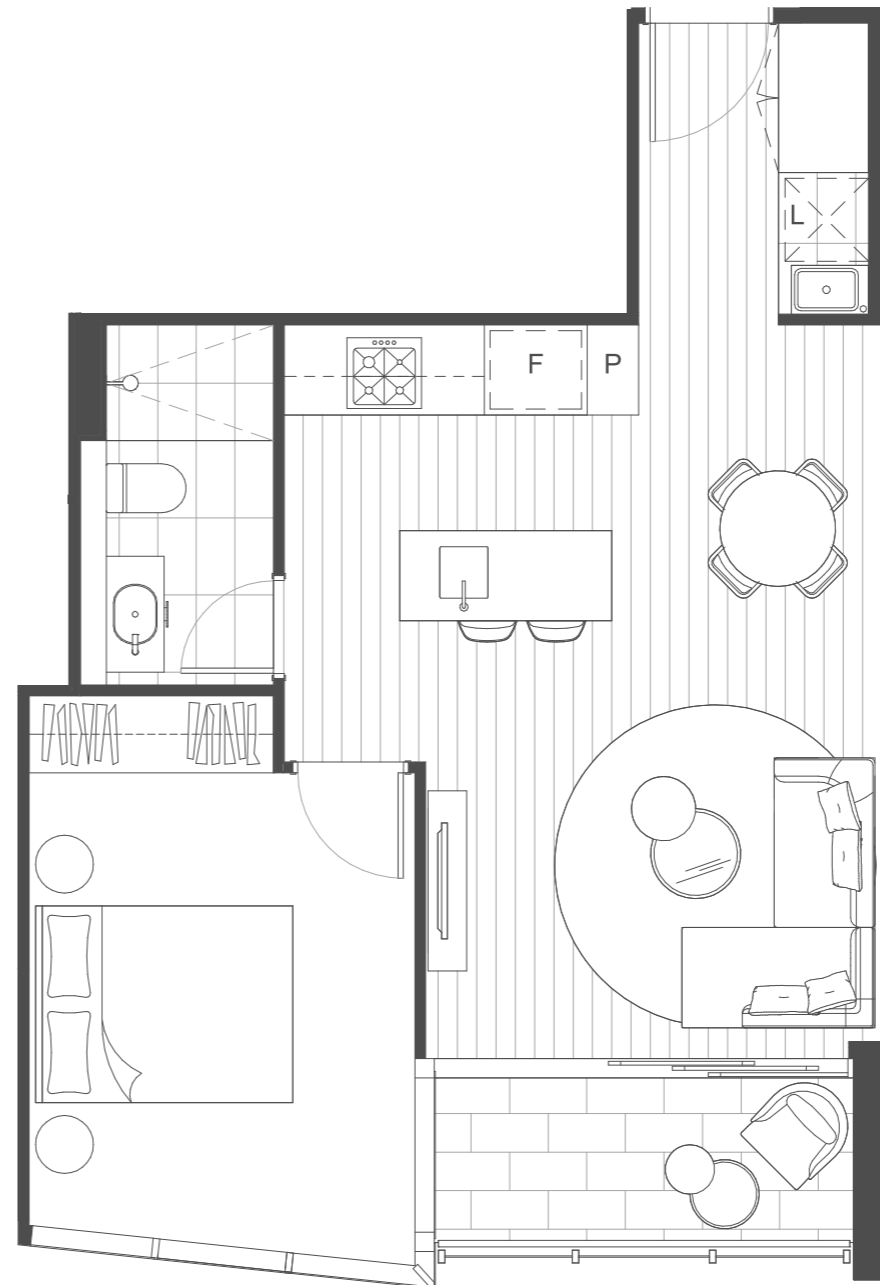
| | | | |
|-------|-------|-------|-------|
| 22211 | 23311 | 24411 | 25511 |
| 22311 | 23411 | 24511 | 25611 |
| 22411 | 23511 | 24611 | 25711 |
| 22511 | 23611 | 24711 | 25811 |
| 22611 | 23711 | 24811 | 25909 |
| 22711 | 23811 | 24911 | 26009 |
| 22811 | 23911 | 25011 | 26109 |
| 22911 | 24011 | 25111 | 26209 |
| 23011 | 24111 | 25211 | 26309 |
| 23111 | 24211 | 25311 | |
| 23211 | 24311 | 25411 | |

Location



DISCLAIMER

The contents of this page, including all drawings and plans, have been prepared on an indicative basis for illustrative purposes only, do not necessarily reflect the final design or layout, are not necessarily to scale, and may be subject to change without notice. While the information in this page has been prepared with due care, to the maximum extent permitted by law, Destination Gold Coast Consortium (comprising Destination Gold Coast Pty Ltd, The Star Entertainment Group, Far East Consortium and Chow Tai Fook Enterprises) and their related entities, employees, officers, directors and agents do not make any representation or warranty about the accuracy or completeness of the information in this document and exclude any liability arising in connection with this document.



E P S I L O N
 THE STAR  RESIDENCES
 GOLD COAST

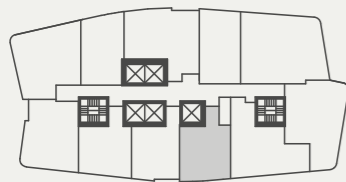
1 Bed + 1 Bath Residence

| | | |
|----------------|------------------|------------------|
| Type: C | | |
| Levels: | 21 - 42 | 43 - 63 |
| Internal Area: | 51m ² | 50m ² |
| Balcony Area: | 6m ² | 6m ² |
| Total Area: | 57m ² | 56m ² |

Residence Number

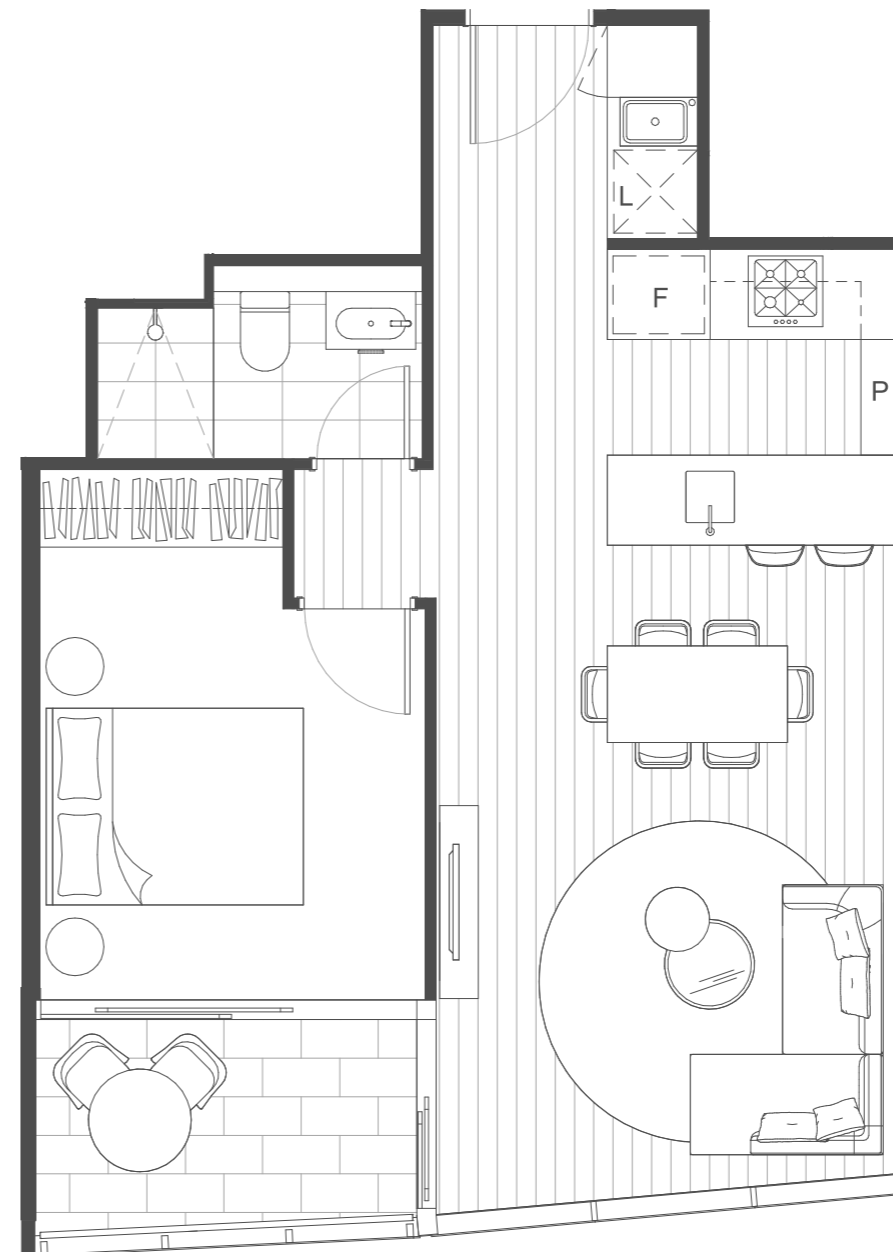
| | | | |
|-------|-------|-------|-------|
| 22110 | 23210 | 24310 | 25410 |
| 22210 | 23310 | 24410 | 25510 |
| 22310 | 23410 | 24510 | 25610 |
| 22410 | 23510 | 24610 | 25710 |
| 22510 | 23610 | 24710 | 25808 |
| 22610 | 23710 | 24810 | 25908 |
| 22710 | 23810 | 24910 | 26008 |
| 22810 | 23910 | 25010 | 26108 |
| 22910 | 24010 | 25110 | 26208 |
| 23010 | 24110 | 25210 | 26308 |
| 23110 | 24210 | 25310 | |

Location



DISCLAIMER

The contents of this page, including all drawings and plans, have been prepared on an indicative basis for illustrative purposes only, do not necessarily reflect the final design or layout, are not necessarily to scale, and may be subject to change without notice. While the information in this page has been prepared with due care, to the maximum extent permitted by law, Destination Gold Coast Consortium (comprising Destination Gold Coast Pty Ltd, The Star Entertainment Group, Far East Consortium and Chow Tai Fook Enterprises) and their related entities, employees, officers, directors and agents do not make any representation or warranty about the accuracy or completeness of the information in this document and exclude any liability arising in connection with this document.



E P S I L O N
 THE STAR  RESIDENCES
 GOLD COAST

1 Bed + 1 Bath Residence

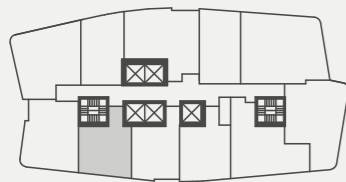
Type: D
 Levels: 22 - 63

Internal Area: 50m²
 Balcony Area: 7m²
 Total Area: 56m²

Residence Number

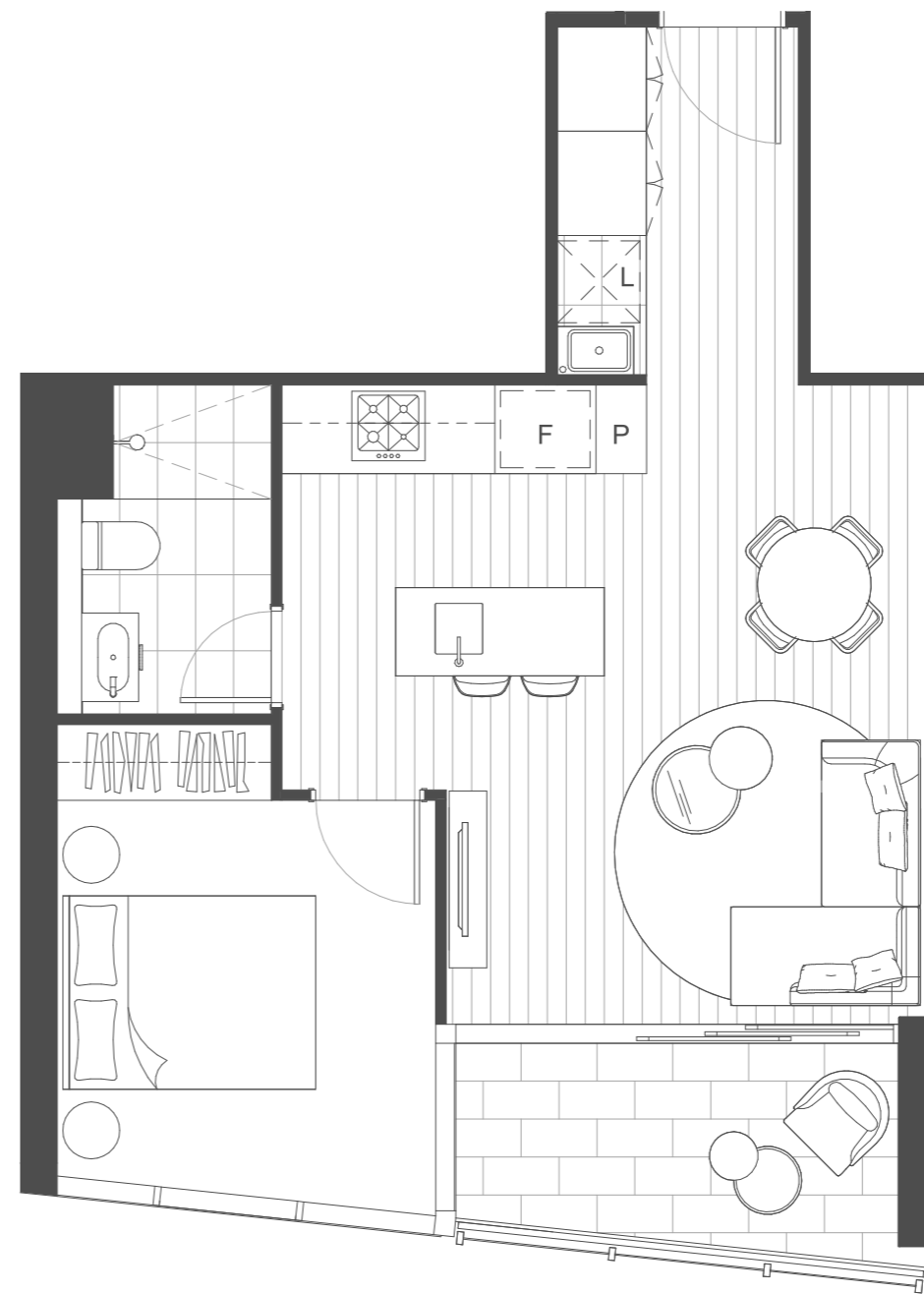
| | | | |
|-------|-------|-------|-------|
| 22201 | 23301 | 24401 | 25501 |
| 22301 | 23401 | 24501 | 25601 |
| 22401 | 23501 | 24601 | 25701 |
| 22501 | 23601 | 24701 | 25801 |
| 22601 | 23701 | 24801 | 25901 |
| 22701 | 23801 | 24901 | 26001 |
| 22801 | 23901 | 25001 | 26101 |
| 22901 | 24001 | 25101 | 26201 |
| 23001 | 24101 | 25201 | 26301 |
| 23101 | 24201 | 25301 | |
| 23201 | 24301 | 25401 | |

Location



DISCLAIMER

The contents of this page, including all drawings and plans, have been prepared on an indicative basis for illustrative purposes only, do not necessarily reflect the final design or layout, are not necessarily to scale, and may be subject to change without notice. While the information in this page has been prepared with due care, to the maximum extent permitted by law, Destination Gold Coast Consortium (comprising Destination Gold Coast Pty Ltd, The Star Entertainment Group, Far East Consortium and Chow Tai Fook Enterprises) and their related entities, employees, officers, directors and agents do not make any representation or warranty about the accuracy or completeness of the information in this document and exclude any liability arising in connection with this document.



E P S I L O N
 THE STAR  RESIDENCES
 GOLD COAST

1 Bed + 1 Bath + Study Residence

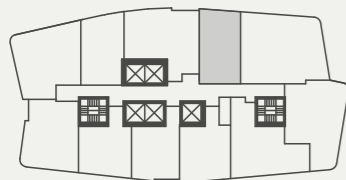
Type: E
 Levels: 21 - 58

Internal Area: 53m²
 Balcony Area: 7m²
 Total Area: 60m²

Residence Number

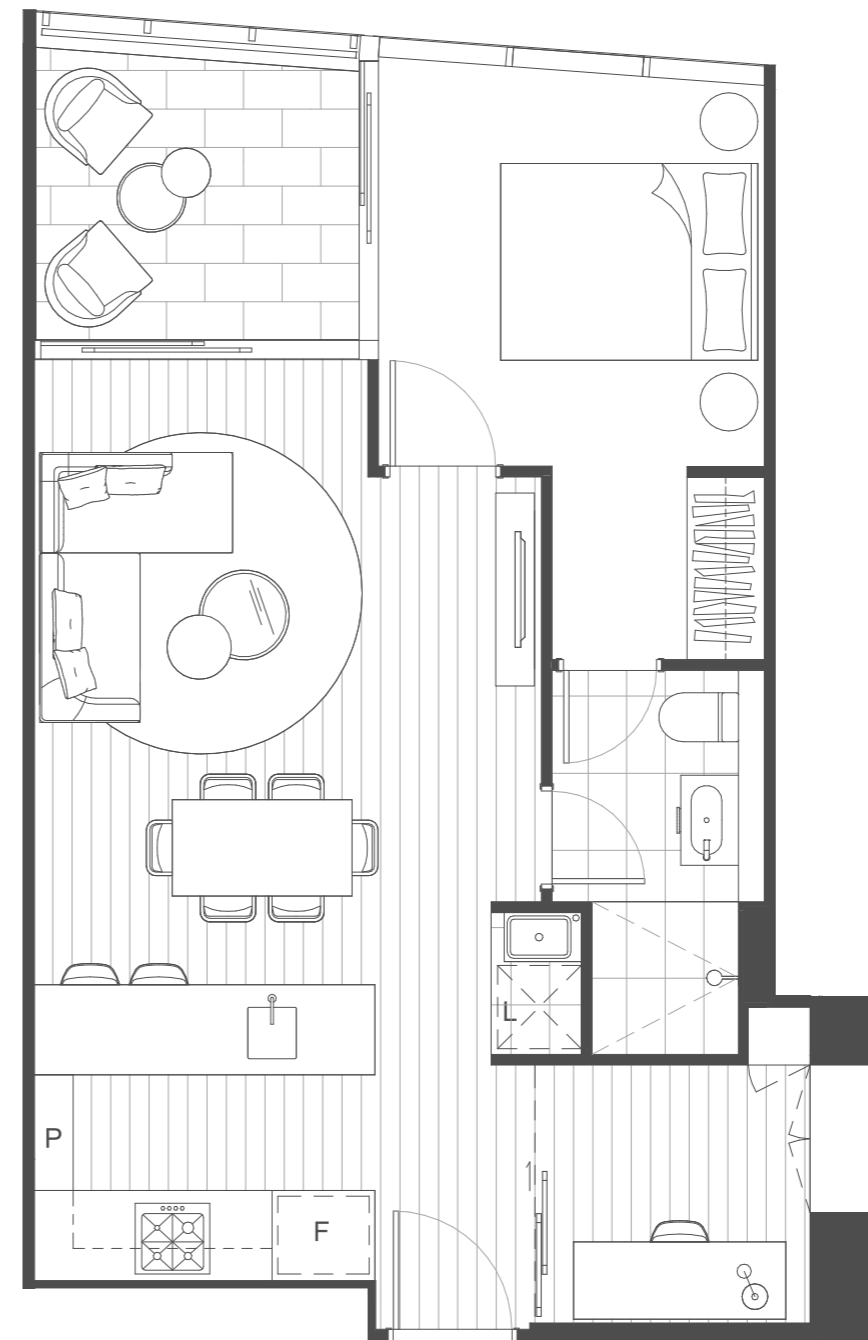
| | | | |
|-------|-------|-------|-------|
| 22106 | 23106 | 24106 | 25106 |
| 22206 | 23206 | 24206 | 25206 |
| 22306 | 23306 | 24306 | 25306 |
| 22406 | 23406 | 24406 | 25406 |
| 22506 | 23506 | 24506 | 25506 |
| 22606 | 23606 | 24606 | 25606 |
| 22706 | 23706 | 24706 | 25706 |
| 22806 | 23806 | 24806 | 25806 |
| 22906 | 23906 | 24906 | |
| 23006 | 24006 | 25006 | |

Location



DISCLAIMER

The contents of this page, including all drawings and plans, have been prepared on an indicative basis for illustrative purposes only, do not necessarily reflect the final design or layout, are not necessarily to scale, and may be subject to change without notice. While the information in this page has been prepared with due care, to the maximum extent permitted by law, Destination Gold Coast Consortium (comprising Destination Gold Coast Pty Ltd, The Star Entertainment Group, Far East Consortium and Chow Tai Fook Enterprises) and their related entities, employees, officers, directors and agents do not make any representation or warranty about the accuracy or completeness of the information in this document and exclude any liability arising in connection with this document.



E P S I L O N
 THE STAR  RESIDENCES
 GOLD COAST

1 Bed + 1 Bath Residence

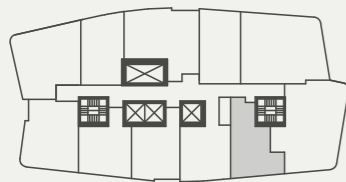
Type: F
 Levels: 22 - 63

Internal Area: 54m²
 Balcony Area: 7m²
 Total Area: 61m²

Residence Number

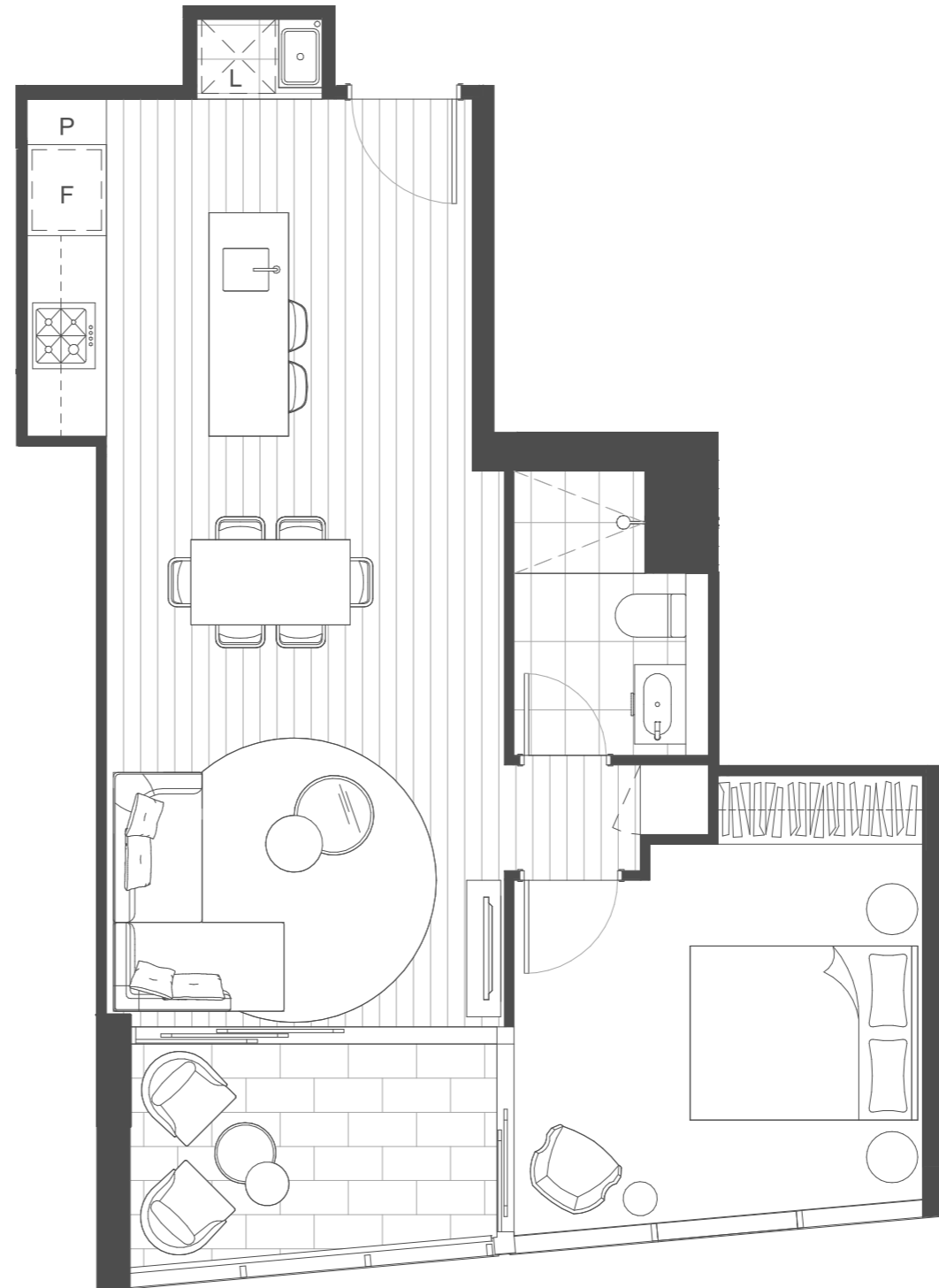
| | | | |
|-------|-------|-------|-------|
| 24209 | 24909 | 25609 | 26307 |
| 24309 | 25009 | 25709 | |
| 24409 | 25109 | 25809 | |
| 24509 | 25209 | 25907 | |
| 24609 | 25309 | 26007 | |
| 24709 | 25409 | 26107 | |
| 24809 | 25509 | 26207 | |

Location



DISCLAIMER

The contents of this page, including all drawings and plans, have been prepared on an indicative basis for illustrative purposes only, do not necessarily reflect the final design or layout, are not necessarily to scale, and may be subject to change without notice. While the information in this page has been prepared with due care, to the maximum extent permitted by law, Destination Gold Coast Consortium (comprising Destination Gold Coast Pty Ltd, The Star Entertainment Group, Far East Consortium and Chow Tai Fook Enterprises) and their related entities, employees, officers, directors and agents do not make any representation or warranty about the accuracy or completeness of the information in this document and exclude any liability arising in connection with this document.



E P S I L O N
 THE STAR  RESIDENCES
 GOLD COAST

1 Bed + 1 Bath + Study Residence

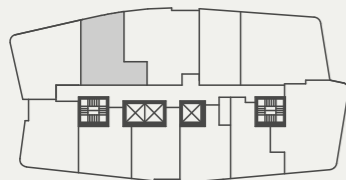
Type: G
 Levels: 22 - 63

Internal Area: 59m²
 Balcony Area: 6m²
 Total Area: 65m²

Residence Number

| | | |
|-------|-------|-------|
| 24304 | 24904 | 25504 |
| 24404 | 25004 | 25604 |
| 24504 | 25104 | 25704 |
| 24604 | 25204 | 25804 |
| 24704 | 25304 | |
| 24804 | 25404 | |

Location



DISCLAIMER

The contents of this page, including all drawings and plans, have been prepared on an indicative basis for illustrative purposes only, do not necessarily reflect the final design or layout, are not necessarily to scale, and may be subject to change without notice. While the information in this page has been prepared with due care, to the maximum extent permitted by law, Destination Gold Coast Consortium (comprising Destination Gold Coast Pty Ltd, The Star Entertainment Group, Far East Consortium and Chow Tai Fook Enterprises) and their related entities, employees, officers, directors and agents do not make any representation or warranty about the accuracy or completeness of the information in this document and exclude any liability arising in connection with this document.



E P S I L O N
 THE STAR  RESIDENCES
 GOLD COAST

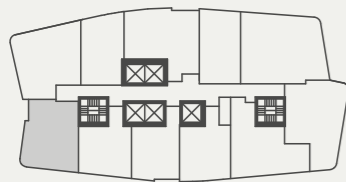
2 Bed + 1 Bath Residence

| | | |
|----------------|------------------|------------------|
| Type: H | | |
| Levels: | 22 - 58 | 59 - 63 |
| Internal Area: | 65m ² | 66m ² |
| Balcony Area: | 6m ² | 6m ² |
| Total Area: | 71m ² | 72m ² |

Residence Number

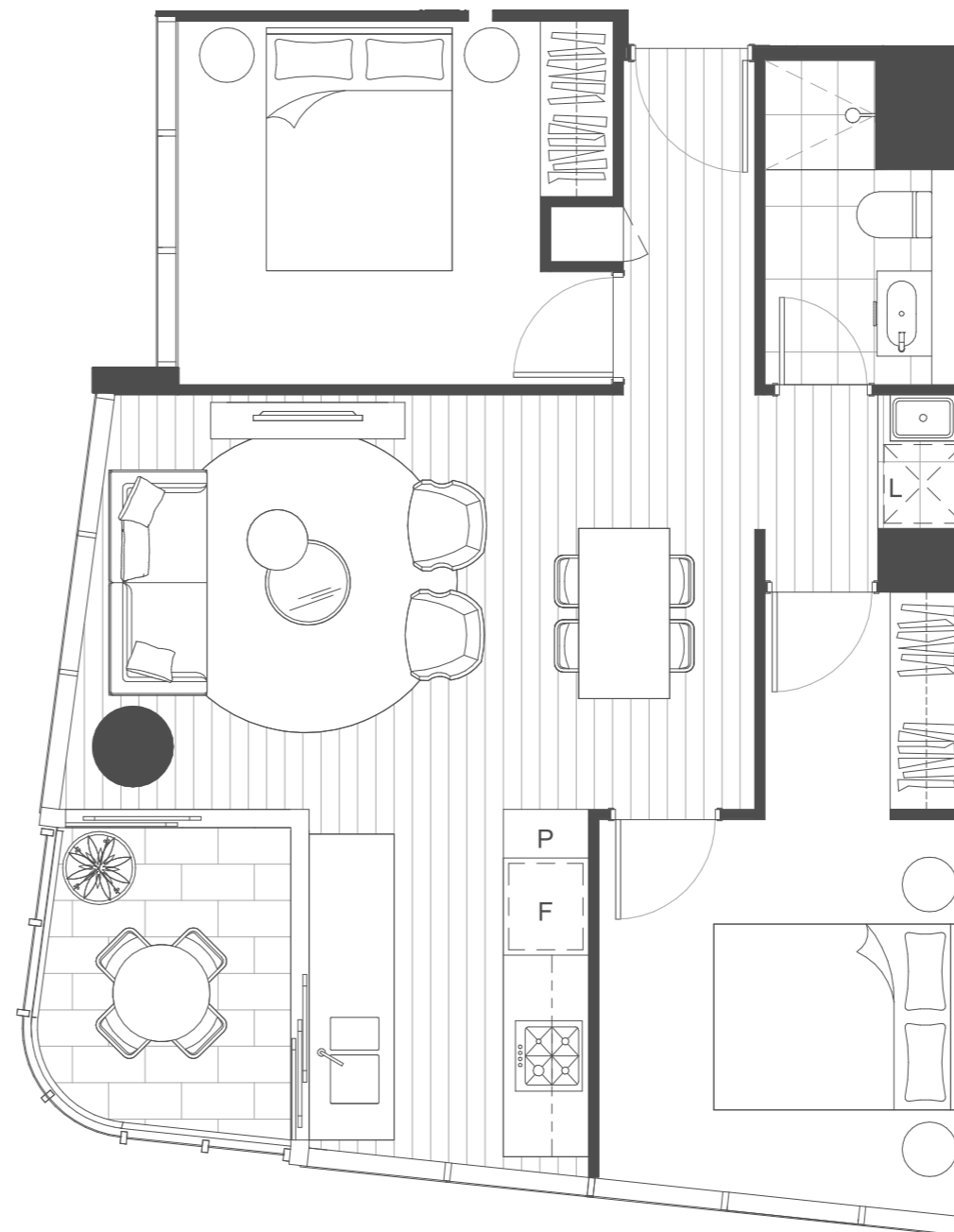
| | | | |
|-------|-------|-------|-------|
| 22202 | 23302 | 24402 | 25502 |
| 22302 | 23402 | 24502 | 25602 |
| 22402 | 23502 | 24602 | 25702 |
| 22502 | 23602 | 24702 | 25802 |
| 22602 | 23702 | 24802 | 25902 |
| 22702 | 23802 | 24902 | 26002 |
| 22802 | 23902 | 25002 | 26102 |
| 22902 | 24002 | 25102 | 26202 |
| 23002 | 24102 | 25202 | 26302 |
| 23102 | 24202 | 25302 | |
| 23202 | 24302 | 25402 | |

Location



DISCLAIMER

The contents of this page, including all drawings and plans, have been prepared on an indicative basis for illustrative purposes only, do not necessarily reflect the final design or layout, are not necessarily to scale, and may be subject to change without notice. While the information in this page has been prepared with due care, to the maximum extent permitted by law, Destination Gold Coast Consortium (comprising Destination Gold Coast Pty Ltd, The Star Entertainment Group, Far East Consortium and Chow Tai Fook Enterprises) and their related entities, employees, officers, directors and agents do not make any representation or warranty about the accuracy or completeness of the information in this document and exclude any liability arising in connection with this document.



E P S I L O N
 THE STAR RESIDENCES
 GOLD COAST

2 Bed + 2 Bath Residence

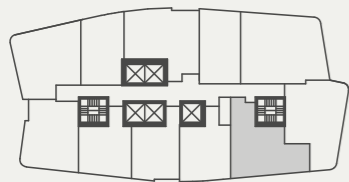
Type: I
 Levels: 21 - 41

Internal Area: 74m²
 Balcony Area: 7m²
 Total Area: 81m²

Residence Number

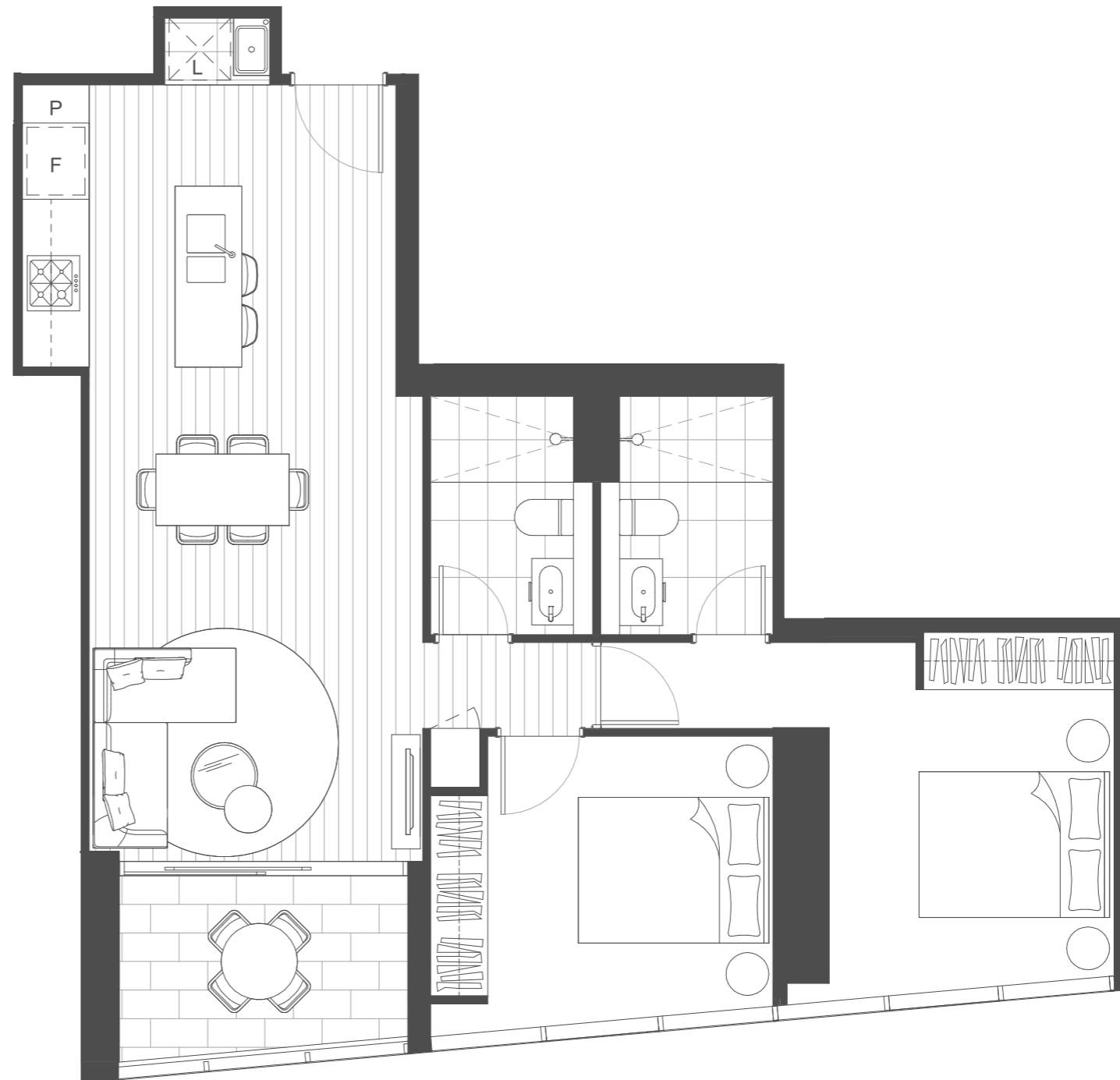
| | | | |
|-------|-------|-------|-------|
| 22109 | 22709 | 23309 | 23909 |
| 22209 | 22809 | 23409 | 24009 |
| 22309 | 22909 | 23509 | 24109 |
| 22409 | 23009 | 23609 | |
| 22509 | 23109 | 23709 | |
| 22609 | 23209 | 23809 | |

Location



DISCLAIMER

The contents of this page, including all drawings and plans, have been prepared on an indicative basis for illustrative purposes only, do not necessarily reflect the final design or layout, are not necessarily to scale, and may be subject to change without notice. While the information in this page has been prepared with due care, to the maximum extent permitted by law, Destination Gold Coast Consortium (comprising Destination Gold Coast Pty Ltd, The Star Entertainment Group, Far East Consortium and Chow Tai Fook Enterprises) and their related entities, employees, officers, directors and agents do not make any representation or warranty about the accuracy or completeness of the information in this document and exclude any liability arising in connection with this document.



E P S I L O N
 THE STAR  RESIDENCES
 GOLD COAST

2 Bed + 2 Bath Residence

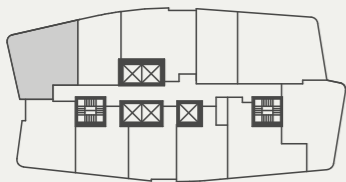
Type: J
 Levels: 22 - 58

Internal Area: 73m²
 Balcony Area: 7m²
 Total Area: 80m²

Residence Number

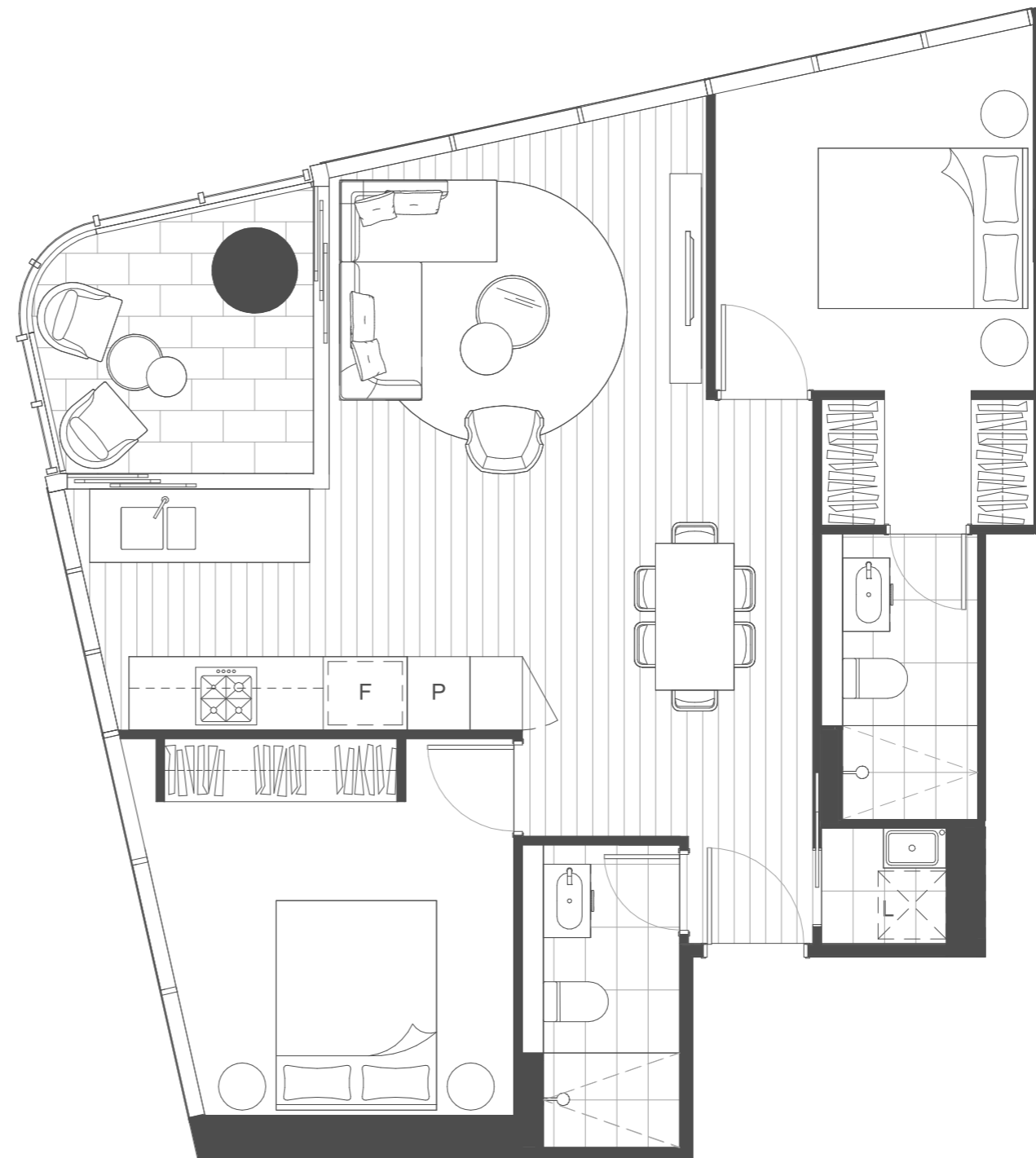
| | | | |
|-------|-------|-------|-------|
| 22203 | 23203 | 24203 | 25203 |
| 22303 | 23303 | 24303 | 25303 |
| 22403 | 23403 | 24403 | 25403 |
| 22503 | 23503 | 24503 | 25503 |
| 22603 | 23603 | 24603 | 25603 |
| 22703 | 23703 | 24703 | 25703 |
| 22803 | 23803 | 24803 | 25803 |
| 22903 | 23903 | 24903 | |
| 23003 | 24003 | 25003 | |
| 23103 | 24103 | 25103 | |

Location



DISCLAIMER

The contents of this page, including all drawings and plans, have been prepared on an indicative basis for illustrative purposes only, do not necessarily reflect the final design or layout, are not necessarily to scale, and may be subject to change without notice. While the information in this page has been prepared with due care, to the maximum extent permitted by law, Destination Gold Coast Consortium (comprising Destination Gold Coast Pty Ltd, The Star Entertainment Group, Far East Consortium and Chow Tai Fook Enterprises) and their related entities, employees, officers, directors and agents do not make any representation or warranty about the accuracy or completeness of the information in this document and exclude any liability arising in connection with this document.



E P S I L O N
 THE STAR  RESIDENCES
 GOLD COAST

2 Bed + 2 Bath Residence

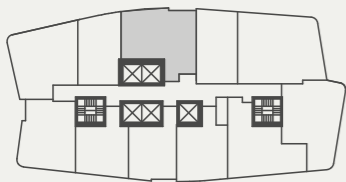
Type: K
 Levels: 22 - 42

Internal Area: 75m²
 Balcony Area: 7m²
 Total Area: 82m²

Residence Number

| | | | |
|-------|-------|-------|-------|
| 22205 | 22805 | 23405 | 24005 |
| 22305 | 22905 | 23505 | 24105 |
| 22405 | 23005 | 23605 | 24205 |
| 22505 | 23105 | 23705 | |
| 22605 | 23205 | 23805 | |
| 22705 | 23305 | 23905 | |

Location



DISCLAIMER

The contents of this page, including all drawings and plans, have been prepared on an indicative basis for illustrative purposes only, do not necessarily reflect the final design or layout, are not necessarily to scale, and may be subject to change without notice. While the information in this page has been prepared with due care, to the maximum extent permitted by law, Destination Gold Coast Consortium (comprising Destination Gold Coast Pty Ltd, The Star Entertainment Group, Far East Consortium and Chow Tai Fook Enterprises) and their related entities, employees, officers, directors and agents do not make any representation or warranty about the accuracy or completeness of the information in this document and exclude any liability arising in connection with this document.



E P S I L O N
 THE STAR  RESIDENCES
 GOLD COAST

2 Bed + 2 Bath Residence

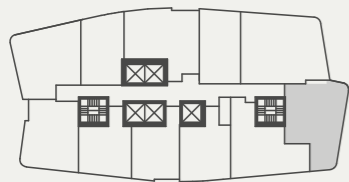
Type: L
 Levels: 21 - 41

Internal Area: 74m²
 Balcony Area: 9m²
 Total Area: 83m²

Residence Number

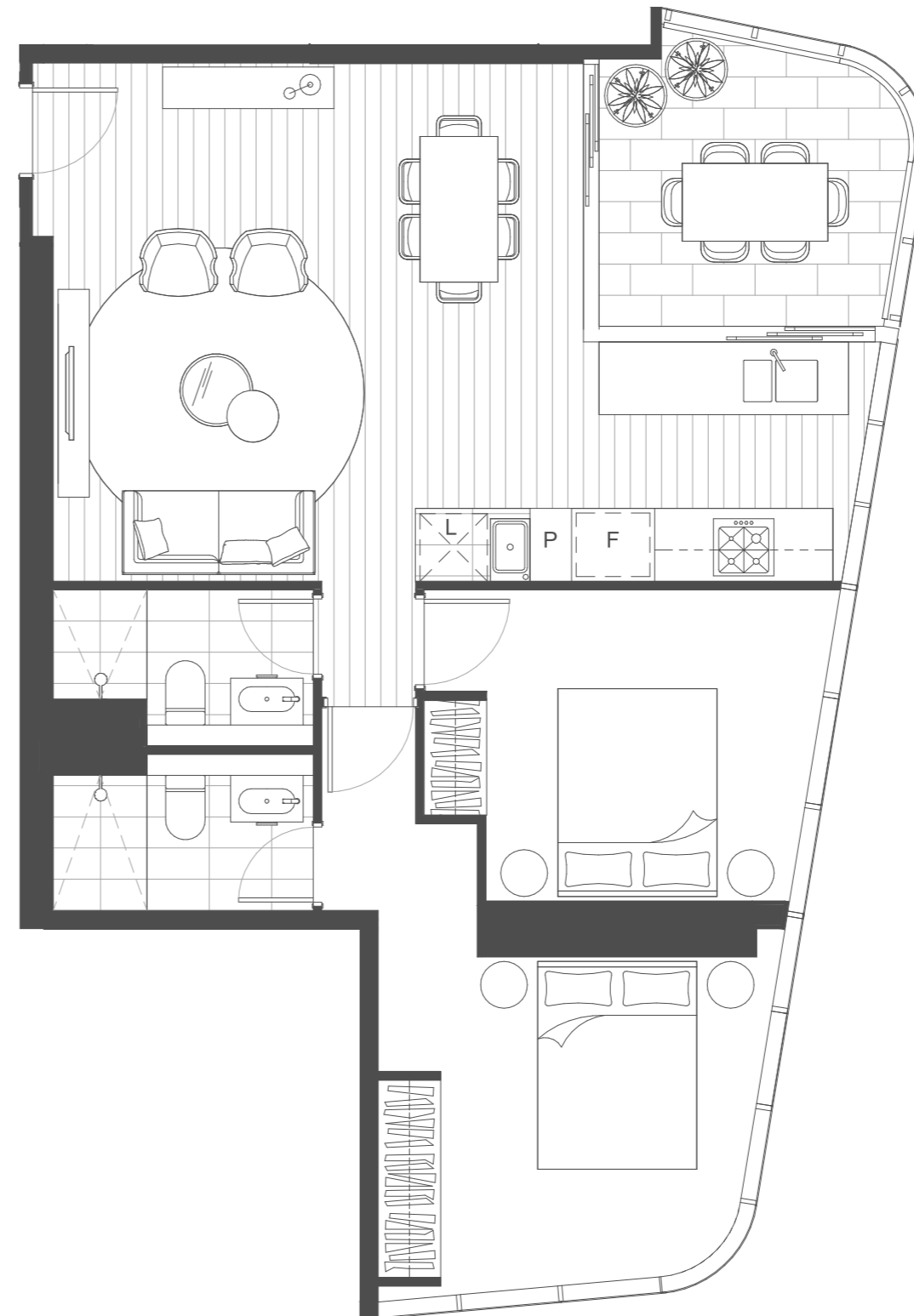
| | | | |
|-------|-------|-------|-------|
| 22108 | 22708 | 23308 | 23908 |
| 22208 | 22808 | 23408 | 24008 |
| 22308 | 22908 | 23508 | 24108 |
| 22408 | 23008 | 23608 | |
| 22508 | 23108 | 23708 | |
| 22608 | 23208 | 23808 | |

Location



DISCLAIMER

The contents of this page, including all drawings and plans, have been prepared on an indicative basis for illustrative purposes only, do not necessarily reflect the final design or layout, are not necessarily to scale, and may be subject to change without notice. While the information in this page has been prepared with due care, to the maximum extent permitted by law, Destination Gold Coast Consortium (comprising Destination Gold Coast Pty Ltd, The Star Entertainment Group, Far East Consortium and Chow Tai Fook Enterprises) and their related entities, employees, officers, directors and agents do not make any representation or warranty about the accuracy or completeness of the information in this document and exclude any liability arising in connection with this document.



E P S I L O N
 THE STAR  RESIDENCES
 GOLD COAST

2 Bed + 2 Bath Residence

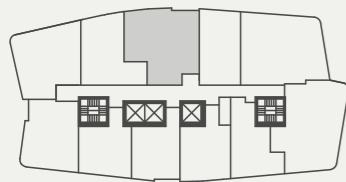
Type: M
 Levels: 43 - 58

Internal Area: 81m²
 Balcony Area: 7m²
 Total Area: 88m²

Residence Number

| | | |
|-------|-------|-------|
| 24305 | 24905 | 25505 |
| 24405 | 25005 | 25605 |
| 24505 | 25105 | 25705 |
| 24605 | 25205 | 25805 |
| 24705 | 25305 | |
| 24805 | 25405 | |

Location



DISCLAIMER

The contents of this page, including all drawings and plans, have been prepared on an indicative basis for illustrative purposes only, do not necessarily reflect the final design or layout, are not necessarily to scale, and may be subject to change without notice. While the information in this page has been prepared with due care, to the maximum extent permitted by law, Destination Gold Coast Consortium (comprising Destination Gold Coast Pty Ltd, The Star Entertainment Group, Far East Consortium and Chow Tai Fook Enterprises) and their related entities, employees, officers, directors and agents do not make any representation or warranty about the accuracy or completeness of the information in this document and exclude any liability arising in connection with this document.



E P S I L O N
 THE STAR  RESIDENCES
 GOLD COAST

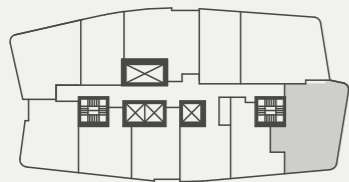
2 Bed + 2 Bath + MPR Residence

| | | |
|----------------|-------------------|-------------------|
| Type: N | | |
| Levels: | 42 - 58 | 59 - 63 |
| Internal Area: | 93m ² | 94m ² |
| Balcony Area: | 9m ² | 9m ² |
| Total Area: | 102m ² | 103m ² |

Residence Number

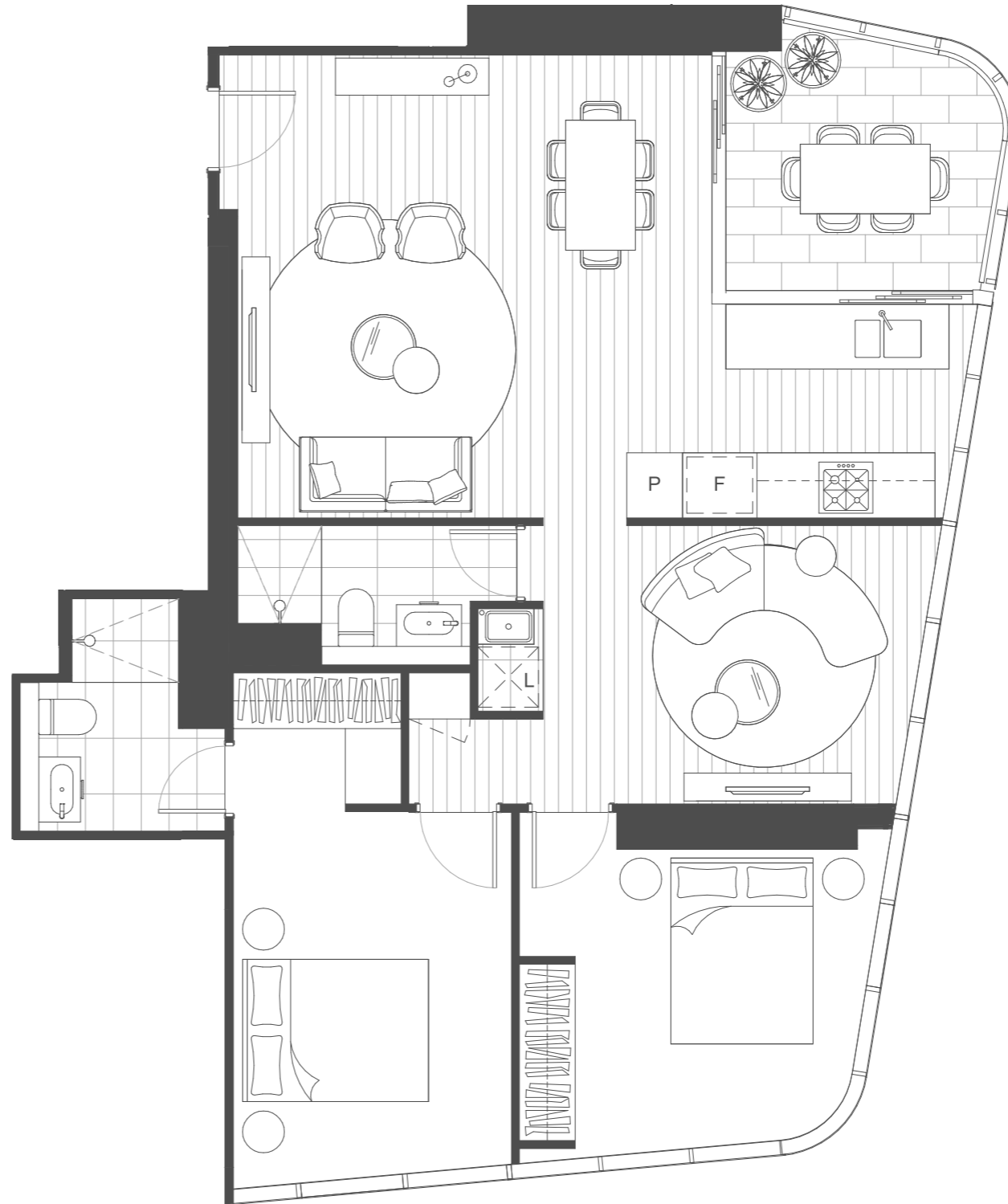
| | | | |
|-------|-------|-------|-------|
| 24208 | 24808 | 25408 | 26006 |
| 24308 | 24908 | 25508 | 26106 |
| 24408 | 25008 | 25608 | 26206 |
| 24508 | 25108 | 25708 | 26306 |
| 24608 | 25208 | 25808 | |
| 24708 | 25308 | 25906 | |

Location



DISCLAIMER

The contents of this page, including all drawings and plans, have been prepared on an indicative basis for illustrative purposes only, do not necessarily reflect the final design or layout, are not necessarily to scale, and may be subject to change without notice. While the information in this page has been prepared with due care, to the maximum extent permitted by law, Destination Gold Coast Consortium (comprising Destination Gold Coast Pty Ltd, The Star Entertainment Group, Far East Consortium and Chow Tai Fook Enterprises) and their related entities, employees, officers, directors and agents do not make any representation or warranty about the accuracy or completeness of the information in this document and exclude any liability arising in connection with this document.



E P S I L O N
 THE STAR  RESIDENCES
 GOLD COAST

2 Bed + 2 Bath + MPR Residence

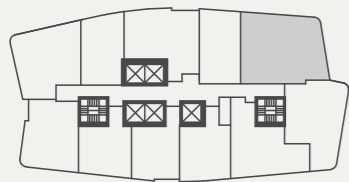
Type: 0
 Levels: 21 - 58

Internal Area: 97m²
 Balcony Area: 9m²
 Total Area: 106m²

Residence Number

| | | | |
|-------|-------|-------|-------|
| 22107 | 23107 | 24107 | 25107 |
| 22207 | 23207 | 24207 | 25207 |
| 22307 | 23307 | 24307 | 25307 |
| 22407 | 23407 | 24407 | 25407 |
| 22507 | 23507 | 24507 | 25507 |
| 22607 | 23607 | 24607 | 25607 |
| 22707 | 23707 | 24707 | 25707 |
| 22807 | 23807 | 24807 | 25807 |
| 22907 | 23907 | 24907 | |
| 23007 | 24007 | 25007 | |

Location



DISCLAIMER

The contents of this page, including all drawings and plans, have been prepared on an indicative basis for illustrative purposes only, do not necessarily reflect the final design or layout, are not necessarily to scale, and may be subject to change without notice. While the information in this page has been prepared with due care, to the maximum extent permitted by law, Destination Gold Coast Consortium (comprising Destination Gold Coast Pty Ltd, The Star Entertainment Group, Far East Consortium and Chow Tai Fook Enterprises) and their related entities, employees, officers, directors and agents do not make any representation or warranty about the accuracy or completeness of the information in this document and exclude any liability arising in connection with this document.



E P S I L O N
 THE STAR  RESIDENCES
 GOLD COAST

3 Bed + 2 Bath Residence

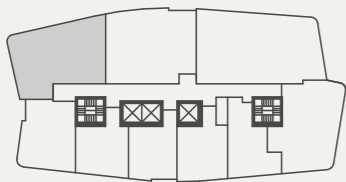
Type: P
 Levels: 59 - 63

Internal Area: 100m²
 Balcony Area: 12m²
 Total Area: 112m²

Residence Number

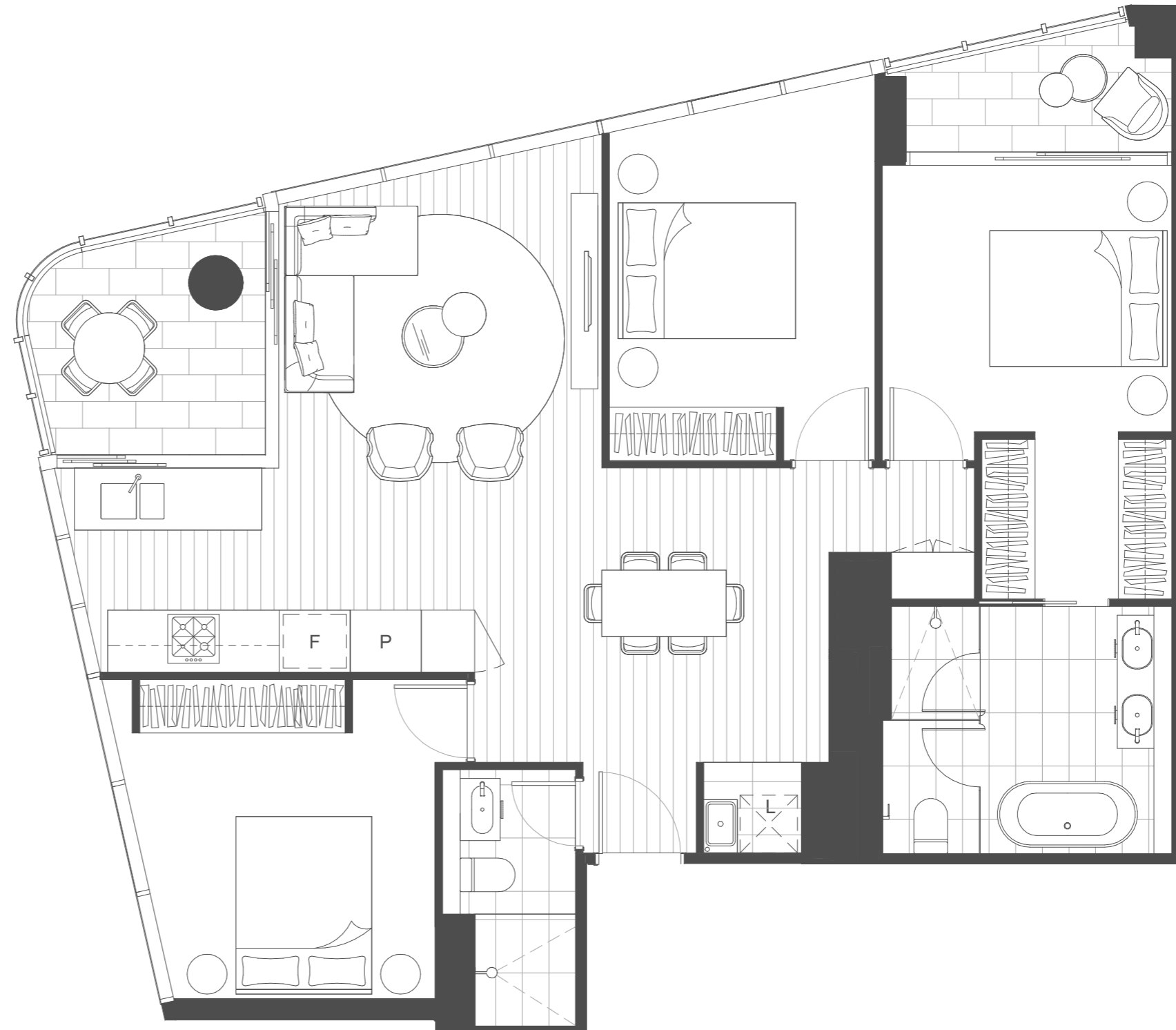
- 25903
- 26003
- 26103
- 26203
- 26303

Location



DISCLAIMER

The contents of this page, including all drawings and plans, have been prepared on an indicative basis for illustrative purposes only, do not necessarily reflect the final design or layout, are not necessarily to scale, and may be subject to change without notice. While the information in this page has been prepared with due care, to the maximum extent permitted by law, Destination Gold Coast Consortium (comprising Destination Gold Coast Pty Ltd, The Star Entertainment Group, Far East Consortium and Chow Tai Fook Enterprises) and their related entities, employees, officers, directors and agents do not make any representation or warranty about the accuracy or completeness of the information in this document and exclude any liability arising in connection with this document.



E P S I L O N
 THE STAR  RESIDENCES
 GOLD COAST

3 Bed + 2 Bath Residence

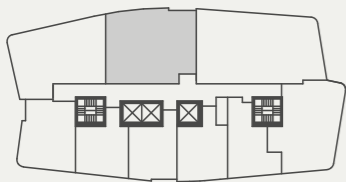
Type: Q
 Levels: 59 - 63

Internal Area: 108m²
 Balcony Area: 14m²
 Total Area: 122m²

Residence Number

- 25904
- 26004
- 26104
- 26204
- 26304

Location



DISCLAIMER

The contents of this page, including all drawings and plans, have been prepared on an indicative basis for illustrative purposes only, do not necessarily reflect the final design or layout, are not necessarily to scale, and may be subject to change without notice. While the information in this page has been prepared with due care, to the maximum extent permitted by law, Destination Gold Coast Consortium (comprising Destination Gold Coast Pty Ltd, The Star Entertainment Group, Far East Consortium and Chow Tai Fook Enterprises) and their related entities, employees, officers, directors and agents do not make any representation or warranty about the accuracy or completeness of the information in this document and exclude any liability arising in connection with this document.



E P S I L O N
 THE STAR  RESIDENCES
 GOLD COAST

3 Bed + 3 Bath Residence

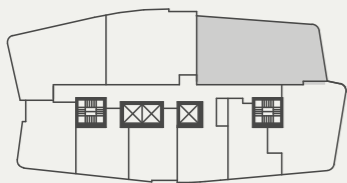
Type: R
 Levels: 60 - 63

Internal Area: 120m²
 Balcony Area: 27m²
 Total Area: 147m²

Residence Number

- 26005
- 26105
- 26205
- 26305

Location



DISCLAIMER

The contents of this page, including all drawings and plans, have been prepared on an indicative basis for illustrative purposes only, do not necessarily reflect the final design or layout, are not necessarily to scale, and may be subject to change without notice. While the information in this page has been prepared with due care, to the maximum extent permitted by law, Destination Gold Coast Consortium (comprising Destination Gold Coast Pty Ltd, The Star Entertainment Group, Far East Consortium and Chow Tai Fook Enterprises) and their related entities, employees, officers, directors and agents do not make any representation or warranty about the accuracy or completeness of the information in this document and exclude any liability arising in connection with this document.



E P S I L O N
 THE STAR  RESIDENCES
 GOLD COAST

3 Bed + 3 Bath Residence

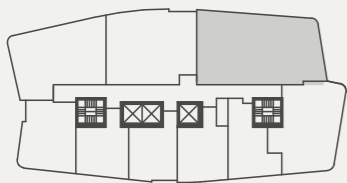
Type: S
 Levels: 59

Internal Area: 128m²
 Balcony Area: 40m²
 Total Area: 168m²

Residence Number

25905

Location



DISCLAIMER

The contents of this page, including all drawings and plans, have been prepared on an indicative basis for illustrative purposes only, do not necessarily reflect the final design or layout, are not necessarily to scale, and may be subject to change without notice. While the information in this page has been prepared with due care, to the maximum extent permitted by law, Destination Gold Coast Consortium (comprising Destination Gold Coast Pty Ltd, The Star Entertainment Group, Far East Consortium and Chow Tai Fook Enterprises) and their related entities, employees, officers, directors and agents do not make any representation or warranty about the accuracy or completeness of the information in this document and exclude any liability arising in connection with this document.

