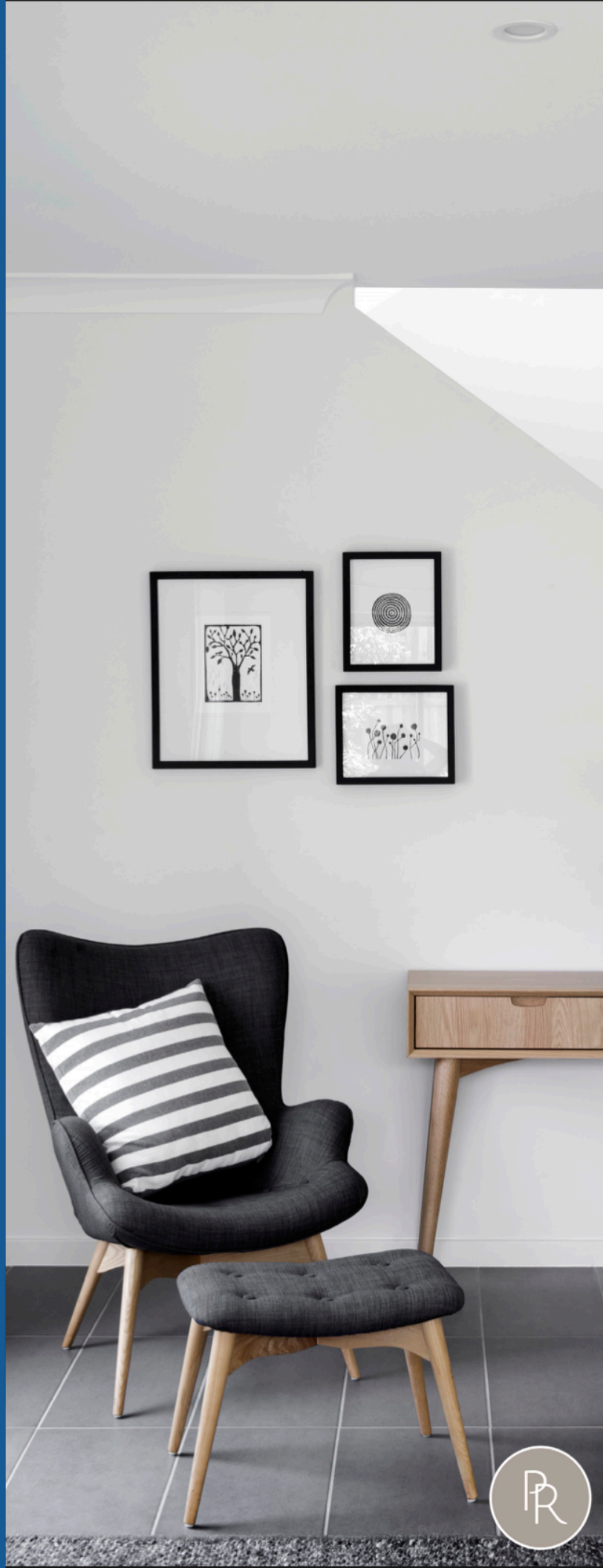


HOUSE & LAND PACKAGE

Pumicestone Residences

Lot 29, Pumicestone Residences,
Caboolture, 4510



Project Homes re-imagined

**You might have built before.
But not like this.**

We identified a need within the residential market for well-crafted homes that are beautifully designed and affordable without making concessions on quality.

We understand that you are unique and that is why we have a design, a facade, and inclusions to suit your individual needs.

The Excel Inclusions in this house & land package have been carefully selected to complement the high quality design of your home.

LIVINGHOMES

World of Difference

+ Full "Turn Key" - ready to move in

+ Bluescope Truecore® Steel house frame with 50 year product warranty

+ Bluescope Colorbond® roof

+ Bradford Energy 1.8kW SolarPack Lite

+ Dulux "Wash & Wear" three (3) coat paint system to internal walls

+ Daikin split system air conditioning

+ R2.5 ceiling batts to plasterboard ceiling

+ Vinyl or mirror inset sliding wardrobe doors

+ 20mm reconstituted stone benchtop with waterfall edge to island bench

+ 600mm Beko oven, cooktop and range hood

+ Your choice of quality ceramic tiles or upgrade to vinyl on all main floors

+ 20mm reconstituted stone benchtop with waterfall edge to island bench

+ Reflective sarking to the underside of the roof and foil insulation wrap to all exterior framed walls

+ Independent Quality Assurance Inspection for every house

Pumicestone Residences

**12 MONTHS
Fixed Price**



Lot 29, Pumicestone Residences, Caboolture QLD 4510

LAND

299m²

\$291,525

HOUSE

\$343,178

PACKAGE

House & Land

\$634,703

DISCLAIMER: Render is for illustration purposes only; alternate garage doors, front doors, paint colours and locations are subject to change. These images may depict fixtures, finishes, features and landscaping not supplied by Living Homes. Also, where our homes come in different floor plan sizes, then the facades shown are generally based on the largest floor plan for that home, hence the facade may not be an accurate representation of all floor plan sizes. Accordingly, the facades are a representation only and may not include upgrades.

LIVINGHOMES
Queensland

Pumicestone Residences

Lot 29

Width 10910mm

Length 17400mm



4 Bed



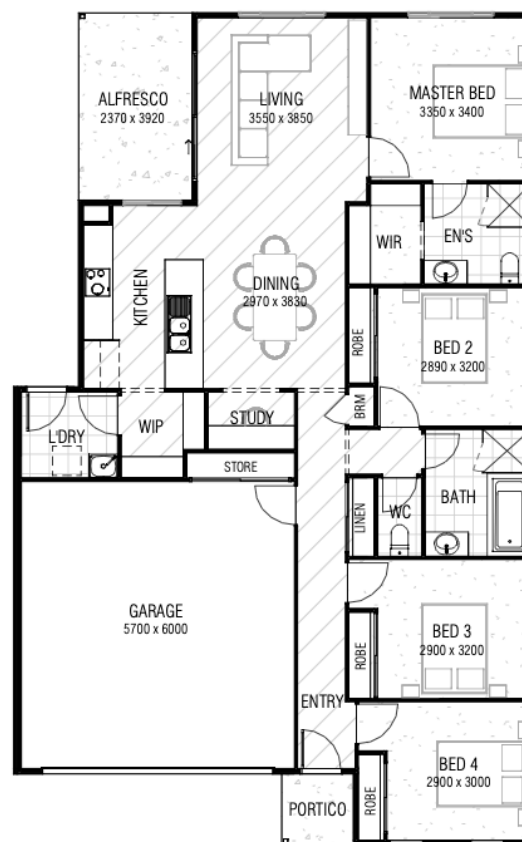
1 Living



2 Bath



2 Car



DISCLAIMER: Render is for illustration purposes only; alternate garage doors, front doors, paint colours and locations are subject to change. These images may depict fixtures, finishes, features and landscaping not supplied by Living Homes. Also, where our homes come in different floor plan sizes, then the facades shown are generally based on the largest floor plan for that home, hence the facade may not be an accurate representation of all floor plan sizes. Accordingly, the facades are a representation only and may not include upgrades.